



Kitakyushu, Japan
TRANSformative
Meetings

Kitakyushu Convention Bureau
Kitakyushu Convention and Visitors Association
3-8-1 Asano, Kokurakita-ku, Kitakyushu, 802-0001, Japan
TEL: +81-93-551-4111 FAX: +81-93-551-0211
<http://kitaqmeeting.jp/>



Japan.
Meetings
& Events
New ideas start here



Kitakyushu, Japan **MEETING PLANNER'S GUIDE**

Why Kitakyushu?

The City of Kitakyushu was created when five cities merged in 1963. Since the government-run Yawata Steel Works began operations in 1901, the city has developed around heavy and chemical industries, such as iron and steel, machinery, and chemical companies, and has underpinned industrial modernization and rapid economic growth in Japan. In recent years, a concentration of industries has gathered in our city that includes robotics, auto, and telecommunications industries. The City of Kitakyushu continues to develop today as a manufacturing town proud of its advanced technological strength.

In addition, city residents, corporations, academic organizations, and the government have united to overcome the severe pollution problems that arose as a result of that development. In 2011, we were the first city in Asia to be selected by the OECD as a Green Growth City that has succeeded in balancing the environment and economy.

We have confronted various issues, including serious pollution, the decline of major industries, and an aging population, but each time have adapted to become a Transformative City that has overcome hardships and turned them into opportunities.

I look forward to seeing you all in the City of Kitakyushu. I believe that those who participate in meetings held in the City of Kitakyushu will be inspired to take the next step.



Kenji Kitahashi
Mayor
City of Kitakyushu, Japan

TRANSformative City Kitakyushu

Kitakyushu was selected as one of four Model Cities for Green Growth by OECD in June 2011.

In 2011, the Organisation for Economic Co-operation and Development (OECD) selected the City of Kitakyushu as a Green Growth Model City that has a balance between the environment and economy. Three other cities (Paris, Chicago, Stockholm) were also chosen as model cities for this program. The City of Kitakyushu is the first Asian city selected for this honor.



Chicago

Paris

Stockholm

Kitakyushu

OECD published a report on green growth in Kitakyushu.

Green growth is a balance between environmental improvement and economic growth. Based on two years of detailed studies and research, OECD announced the publication of a report in the OECD Green Growth Studies series, "Green Growth in Kitakyushu, Japan" (English version published in May 2013; Japanese version published in October 2013).

In this report, OECD evaluated the remarkable actions of Kitakyushu and offered additional recommendations to further promote green growth.



October 2013
Publication of OECD report on
Kitakyushu and organization of
OECD-related meetings in Kitakyushu.



Mayor of Kitakyushu receiving the OECD report

Shift from Overcoming Pollution to International Environmental Cooperation

Modern industry in Japan began in the City of Kitakyushu when the government-run Yawata Steel Works, which had the country's first genuine modern blast furnace, began operating in 1901. The Kitakyushu industrial area supported Japan's rapid growth as one of four major industrial zones. However, this development caused serious industrial pollution in the 1960s.

The citizens, government, and corporations worked together to tackle this pollution problem. Dokai Bay, where even E. coli could not survive, was called the Sea of Death. However, over 100 species of fish and shellfish that once lived in the bay have returned, and the sky, which once recorded the worst dust fall in Japan, was improved to such an extent that the national government chose the City of Kitakyushu as a Star Light Town. We have restored our beautiful ocean and sky.

Kitakyushu's efforts in overcoming pollution were honored in 1990 with the UNEP Global 500 Award, and again in 1992, when it was presented with the UN Local Government Honours Award at the United Nations Conference on Environment and Development (Earth Summit), making it the only municipality in Japan to receive the award.

By conveying the city's globally recognized environmental efforts to developing nations with ever-increasing pollution problems through environmental cooperation activities focusing on Asia, Kitakyushu has begun to contribute to the improvement of the global environment. Starting with its friendship city Dalian in China, today Kitakyushu engages in cooperation activities all across Asia, including South East Asia and India. Kitakyushu's cooperative efforts are not limited to the fields of water and air pollution, but also deal with waste treatment and recycling, water supply and sewerage, and the vast array of environmental problems in Asia resulting from economic growth.

Springboard for
Japan's modern history



Higashida Blast Furnace No. 1 was ignited in 1901 as a government-run steel works. In 1972, it was shut down and there was talk of dismantling it. However, in response to the residents' appeal to preserve it as the birthplace of modern steelmaking in Japan, the City of Kitakyushu decided to carry out care and maintenance and designated it as a cultural property in 1994.

1960s



Today



TRANSformative Industries Leading Industries



Environmental Industries/Forming Next-Generation Energy Bases

Projects Related to Renewable Energy

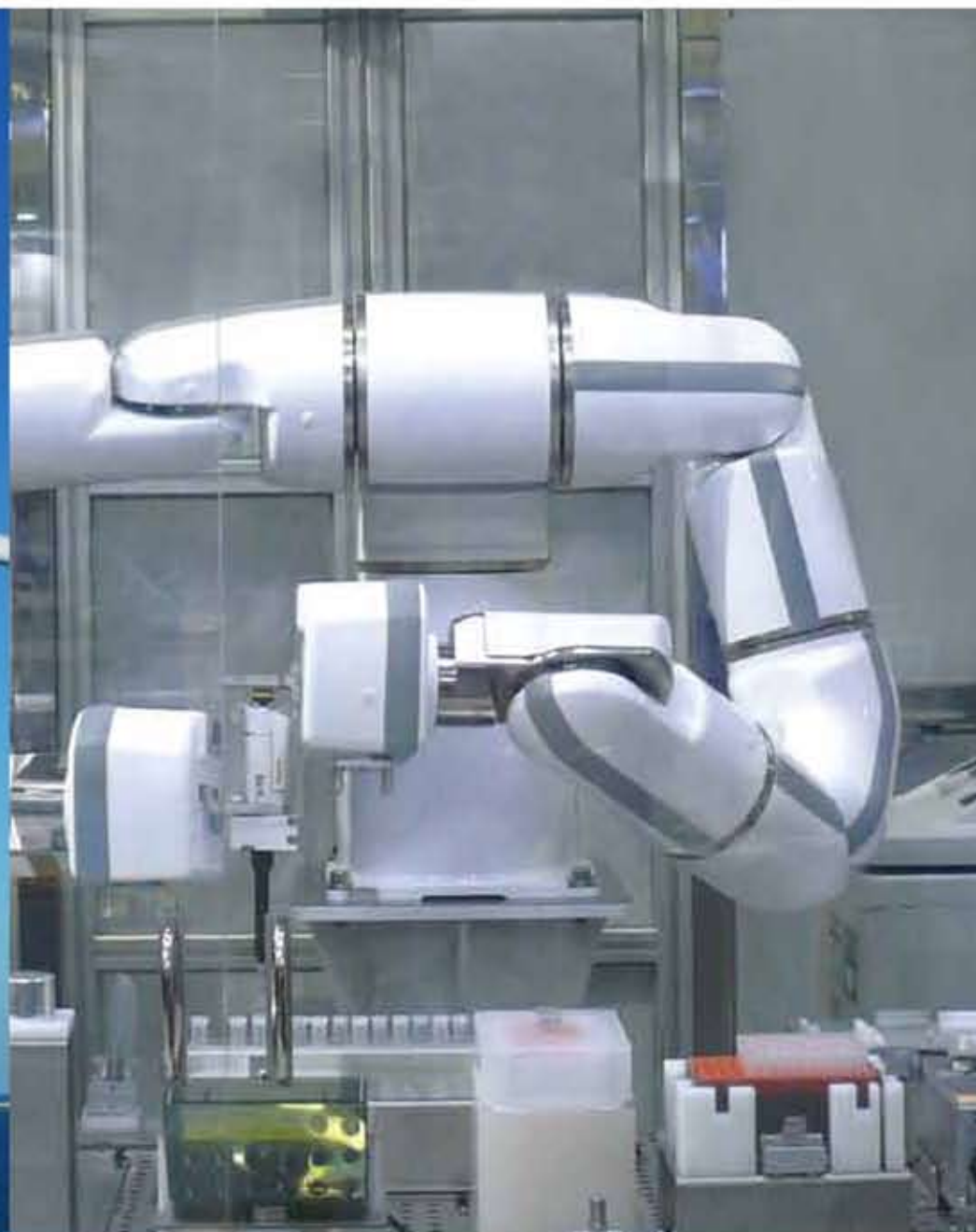
- ★Scheduled construction of offshore wind-generated power plant over approx. 2,700 ha. in the Hibikinada Sea (construction/operation scheduled to start in 2022)
- ★Adoption of 251,715 kW (3rd highest in Japan) of solar-power generation, wind-generated power of 20,852 kW (as of September 2016)

Eco-Town Project

The City of Kitakyushu is developing the Eco-Town Project as the mainstay of environmental and recycling industries promotion. Industrial locations consist of 23 companies and groups, with 9 ongoing empirical research cases, having a total of 1.45 million observers (as of February 2017).

Kitakyushu Smart Community Project

For 5 years from 2010, this project was implemented in the Higashida District. A research demonstration project carried out that strove for further low carbonization succeeded in reducing CO₂ by 51.5% as of 2014.



Robotics Industry

A global manufacturer of industrial robots, Yaskawa Electric Corporation is located in Kitakyushu, which has a growing cluster of corporations and researchers that support the robotics industry.

Industrial robots are anticipated to play an active role in a wide range of fields, from automotive production lines to distribution, and at plants producing medicines and foods. The city is also promoting improved productivity and greater competitive strength by providing support to local manufacturing businesses.

In addition, when it comes to service robots, Kitakyushu is pioneering a demonstration project for nursing care robots with its designation as a National Strategic Special Zone designated in 2017, as well as endeavoring to support research and development for the practical application of new robot technologies, such as robots for inspecting infrastructure.



Creation of a Hub for the Auto Industry and Next-Generation Vehicles

The northern Kyushu area, which also includes Kitakyushu, is home to four automobile manufacturers and forms a major base that supports Japan's automobile industry with a production capacity of 1.54 million vehicles a year. Small- and medium-sized local businesses are also expanding operations and newly entering the market as automobile-parts related companies.

The Kitakyushu Science and Research Park is targeting the development of next-generation vehicles with fully-automated driving functions that utilize artificial intelligence. Kitakyushu is also promoting driving demonstration projects for ultra-compact mobility and the expanded use of fuel cell vehicles, as it aims to become a major base for the development, demonstration, and production of next-generation vehicles in cooperation with automobile manufacturers and the local government.

TRANSformative Research & Development

Kitakyushu Science & Research Park

Kitakyushu Science & Research Park aims to be a base for science and research in Asia to advance the development of technology in new industries. It opened in April 2001 as a one-of-a-kind experiment that brought together science and technology-related national, municipal, and private universities and research institutes on a single campus. Today, leading universities sharing the principles of the Kitakyushu Science & Research Park carry out active education and research activities in technology, particularly focusing on environmental and information technologies.

In addition, the Kitakyushu Foundation for the Advancement of Industry, Science and Technology (FAIS) is working on initiatives, such as developing highly skilled human resources, and supporting research and development aid and industry-academia collaboration.



On-site universities and research institutes.
There are 2,329 university students and 314 researchers (as of May 1, 2016), and national, municipal, and private universities (1 faculty, 4 graduate schools).

- Faculty and Graduate School of Environmental Engineering, University of Kitakyushu
- Graduate School of Life Science and Systems Engineering, Kyushu Institute of Technology
- Graduate School of Information, Production and Systems, Waseda University
- Graduate School of Engineering, Fukuoka University

There are 16 research institutes and 47 research and development companies (as of January 1, 2017).

Joint Graduate School Car Electronics Course / Intelligent Car & Robotics Course

Three universities with campuses in the Kitakyushu Science and Research Park combine each of their strengths to run a collaborative graduate school consisting of a Car Electronics Course in which students study basic technology for automotive electronics, and an Intelligent Car & Robotics Course in which students study intelligence technology for automobiles and robots. Both courses train highly skilled, expert human resources as leaders responsible for the next generation that meet needs in the industrial automotive and robotic fields.

In addition, the AI Sub Course was added to the Intelligent Car & Robotics Course from FY2017 due to the pressing need to nurture human resources capable of undertaking research and development in artificial intelligence, which is a key technology transforming not only industry, but society as a whole.



The four university presidents, mayor of the City of Kitakyushu, chairman of the Kitakyushu Chamber of Commerce and Industry, and the Kitakyushu Convention & Visitors Association attended a ceremony to sign the partnership agreement.

Partnership agreement with four universities in the city on attracting and holding conventions

In August 2015, the City of Kitakyushu, the Kitakyushu Chamber of Commerce and Industry, and the Kitakyushu Convention & Visitors Association concluded a partnership agreement on attracting and holding conventions with the Kyushu Institute of Technology, Kyushu Dental University, The University of Kitakyushu, and the University of Occupational and Environmental Health, Japan, which are all located in the City of Kitakyushu.

The four universities have sponsored meetings or worked as local hosts to hold international meetings and conferences, and will further strive to attract conventions to the city in the future through stronger collaboration.

Kyushu Institute of Technology (Kyutech)

Under the school's founding principle to train skilled individuals proficient in technology, for more than a hundred years, Kyutech has educated highly skilled experts with far-reaching aspirations who possess solid manufacturing experience. With engineering schools and graduate schools, the institute is promoting cutting-edge research in areas including environmental engineering, aerospace engineering, and robotics.



As a wellspring of knowledge, Kyutech actively serves as a local host and sponsors academic meetings that make the most of specialized fields in which the school excels to contribute to the creation and development of next-generation industries through education and research in order to meet the demands of the local community. Kyutech believes doing so contributes to the development of highly skilled human resources.

The University of Kitakyushu



University of Occupational and Environmental Health, Japan



Kyushu Dental University



TRANSformative Impacts

Case in Point



G7 Kitakyushu Energy Ministerial Meeting

Dates: May 1-2, 2016
 Venue: RIHGA Royal Hotel
 Number of Participants: 200 from G7 countries and 3 international organizations
 Organizers: Ministry of Economy, Trade and Industry

Joint Statement: Kitakyushu Initiative on Energy Security for Global Growth

Ministers and other officials from G7 countries gathered together in Kitakyushu at the G7 Kitakyushu Energy Ministerial Meeting (EMM) to discuss the important global issue of energy. Discussions highlighted the issues of promoting energy investments, strengthening energy security, and energy sustainability under the main theme of "Energy Security for Global Growth." The meeting adopted the "Kitakyushu Initiative on Energy Security for Global Growth," which incorporates the outcomes of the "Youth Energy Summit Kitakyushu," at which local students, who are the leaders of the future, studied about and discussed the issues of energy and the environment.



Kitakyushu's Legacy

During the G7 meeting, venue exhibitions and pre- and post-meeting tours were used to spotlight Kitakyushu's advanced environmental and energy measures, as well as technologies and products from local companies, universities, and research institutes. Visitors were welcomed to the city with Kitakyushu's famously warm hospitality, local foods, and traditional culture.

Voices of Participants

Mr. Miguel Arias Cañete,
 EU Commissioner for
 Climate Action and Energy

"Kitakyushu has been the perfect setting for the discussion we had over the last two days on global energy security, sustainability, and innovation because this city is living proof on how clean energy transition can transform our economy and boost energy security."



The 3rd Asia Future Conference

Dates: September 29-October 3, 2016
 Venue: Kitakyushu International Conference Center, the University of Kitakyushu
 Number of Participants: 397 from 18 countries
 Organizers: Sekiguchi Global Research Association, Atsumi International Foundation



The International Rubber Conference 2016 Kitakyushu

Dates: October 24-28, 2016
 Venue: Kitakyushu International Conference Center, West Japan General Exhibition Center Annex
 Number of Participants: 920 from 30 countries
 Organizers: The Society of Rubber Science and Technology, Japan



Major Conferences

YEAR	Meeting
2013	The 15th Tripartite Environment Ministers Meeting among Japan, Korea and China
2014	Asia Simulation Conference -AsiaSim 14-
2015	Asia Navigation Conference 2015 -ANC-
2015	The 7th Conference of Asian International Association of Dental Traumatology
2016	15th International Symposium on Magnetic Bearings -ISMB 15-
2016	2nd WVA-WMA Global Conference on One Health
2016	Prenatal Programming and Toxicity International Conference -PPTOX 5-
2017	16th International Conference on Intelligent Software Methodologies, Tools and Techniques -SoMet 2017-
2018	15th International Symposium on Functionally Graded Materials -ISGMS2018-
2019	The 2017 Asian Control Conference -ASCC2019-

TRANScultural Kitakyushu

The shimmering waves of the sea, breathtaking mountains, and fascinating sightseeing spots can all be reached within 30 minutes by car from Kokura. Visitors can also experience TRANSformative Kitakyushu on their own through environmental and industrial sightseeing tours that are unique to this history-laden city of manufacturing and environmental initiatives.

Spectacular Sights



Kokura Castle



Mt. Sarakura



Kitakyushu Museum of Natural History & Human History



Hiraodai Limestone Plateau



Kanmon Straits



Karato Market (Shimonoseki City)

Unique Venues



Former Matsumoto Residence



Sankiro (traditional Japanese restaurant)

Thrilling Festivals



Kokura Gion Festival



Tobata Gion Festival



Kanmon Strait Fireworks Festival

Cutting-edge Industrial Tourism



TOTO Museum



Nissan Motor Kyushu



YASKAWA Innovation Center



Higashida Blast Furnace Memorial Site

Environmental Educational Tours



Kitakyushu Environment Museum



Kitakyushu Eco-Town



Air

Fukuoka Airport (International)

Flight Time		Flight Time		Flight Time	
Seoul	1:15	Wuhan	4:05	Bangkok	5:10
Busan	0:50	Chengdu	5:45	Hanoi	3:50
Daegu	0:50	Taipei	2:05	Ho Chi Minh City	4:50
Beijing	3:55	Kaohsiung	2:50	Singapore	6:15
Dalian	1:50	Hong Kong	3:25	Guam	3:45
Shanghai	1:30	Macau	3:30	Honolulu	7:57
Qingdao	1:50	Manila	3:35	Helsinki	9:30
Nanjing	2:20				

Fukuoka Airport (Domestic)

Flight Time
Tokyo (Haneda) 1:30
Narita 1:45
Kansai International 1:25
Chubu International 1:00
Plus 22 more cities!

Kitakyushu Airport (International)

Flight Time
Seoul 1:15
Busan 0:50
Dalian 1:50

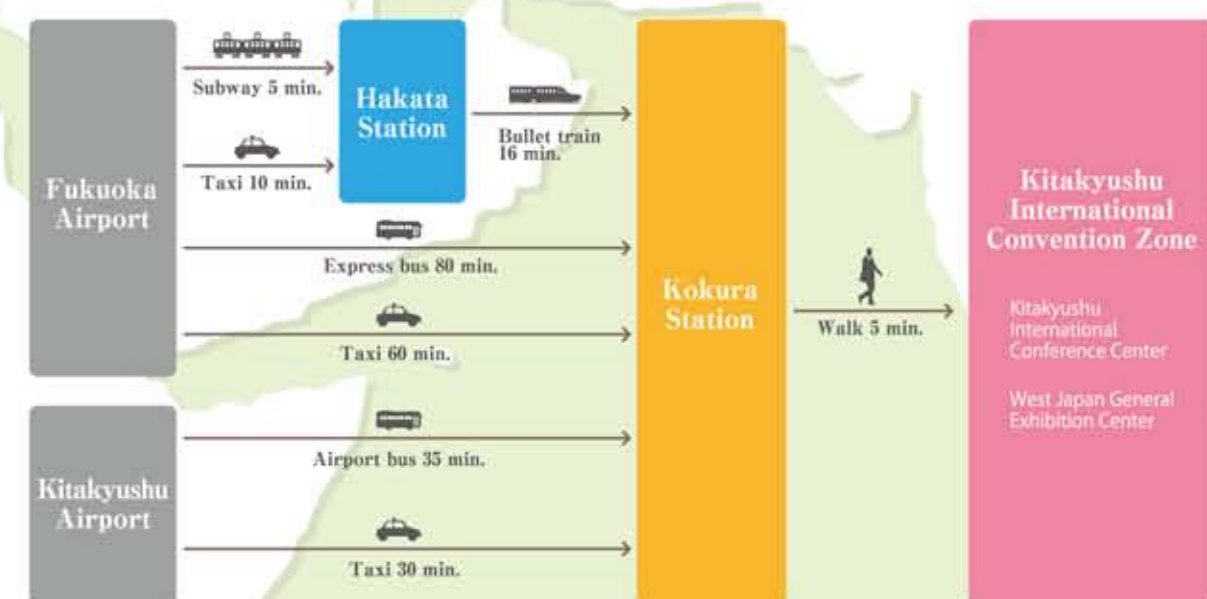
Kitakyushu Airport (Domestic)

Flight Time
Tokyo (Haneda) 1:25
Nagoya (Komaki) 1:15

Bullet train



Required time





Kitakyushu International Convention Zone

Kitakyushu International Convention Zone is directly connected to the bullet train exit of JR Kokura Station, only five minutes away on foot. Featuring an international conference center, exhibition center, and hotels, it is an ideal location for large-scale conventions. It is also conveniently located only 30 minutes away by subway and bullet train from Fukuoka Airport, one of Japan's busiest hubs. Kitakyushu's reasonable costs that are decidedly lower than other major cities in Japan make this an attractive destination for meetings and events of all kinds.

5
Minutes



Meeting Facilities



Kitakyushu International Conference Center

Hall	Size (m2)	Theater	Classroom	Hollow Design	Banquet	Languages
Main Hall	791	585	-	-	-	up to 4 languages
Event Hall	530	-	-	-	450	
International Conference Room	216	200	86※1 156※2	88	-	up to 4 languages
Conference Room11	175	130	90	42	-	
Conference Room21	140	150	108	60	-	
Conference Room22	74	80	48	30	-	
Conference Room31	45	50	36	24	-	
Conference Room32	105	130	78	48	-	
Conference Room33	70	80	48	30	-	

※1: tables equipped for simultaneous interpreting ※2: long tables



AIM Building 3rd Floor

Hall	Size (m2)	Theater	Classroom	Hollow Design
Conference Room 311	92	70	45	36
Conference Room 312	87	70	45	36
Conference Room 313	89	70	45	36
Conference Room 314	87	70	45	36
Conference Room 315	146	130	81	48
Exhibition Hall D	495	400	234	-
Exhibition Hall E	237	200	117	-
Exhibition Hall F	243	200	117	-
Exhibition Hall G	399	200	117	-



West Japan General Exhibition Center Annex

Hall	Size (m2)	Theater	Classroom	Hollow Design
Hall (dividable into three halls)	8,000	6,900	4,500	
Conference Room 301	80	54	36	30
Conference Room 302	87	54	36	30
Conference Room 303	88	54	36	30
Conference Room 304	82	54	36	30
Conference Room 305	52	-	-	16



West Japan General Exhibition Center Main Building

Hall	Size (m2)	Theater	Classroom
Large Exhibition Hall	5,520	3,240	2,160
Medium Exhibition Hall	1,410	810	540

Total Service... Event Consulting to Management

The Kitakyushu Convention Bureau has both a marketing and event services division, which enables us to provide comprehensive services, from marketing and promotions before your event, to on-site management on the day.

○Assistance in Selecting Sites

Request a DVD and pamphlet about Kitakyushu from our Convention Bureau to help you learn about all we have to offer. The Convention Bureau can introduce you to the most appropriate venues for your event and arrange inspection tours to potential sites.

○Kitakyushu MICE Subvention

Kitakyushu offers a subvention of up to 10 million yen, depending on the scale of the event.

○Event Support at the Kitakyushu International Conference Center and West Japan General Exhibition Center

The Convention Bureau will create a comprehensive plan depending on the type of event, and provide total support to ensure that your event exceeds all expectations.

○Pre/Post Tours and Banquets

The Convention Bureau can also plan and arrange pre/post tours and banquets tailored to your needs to make sure your participants have a memorable experience. Kitakyushu is a popular destination for industrial tourism and factory tours, drawing consistent acclaim from participants.

○Arrangement of Convention Volunteers

The Convention Bureau can make arrangements for volunteers to work as registration desk staff, event assistants, and non-professional interpreters.

○Free Convention Items

The Convention Bureau can provide convention bags, maps of the convention zone and surrounding area, and special welcome cards for international visitors that offer discounts at participating businesses in four languages.

○Welcome Signs and Entertainment

The Convention Bureau can set up welcome signs in JR Kokura Station and Kitakyushu Airport and arrange for entertainment and local products at receptions.

Contact

Kitakyushu Convention Bureau

3-8-1 Asano, Kokurakita-ku, Kitakyushu, 802-0001, Japan

TEL: +81-93-551-4111 FAX: +81-93-551-0211

E-mail: contact@hello-kitakyushu.or.jp

<http://kitaqmeeting.jp>

Venues & Accommodation



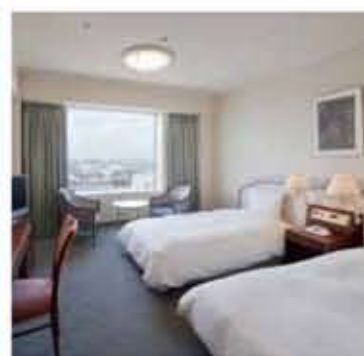
RIHGA Royal Hotel Kokura

ADDRESS 2-14-2 Asano, Kokurakita-ku, Kitakyushu

WEB <http://www.rihga.com/kitakyushu>

PHONE +81-93-531-1121

Guest rooms 295 Meeting rooms 13



Hall	Size (m2)	Theater	Classroom	Banquet
Royal Hall ※1	1,235	1,300	800	1,100
Diamond	210	180	80	100
Sapphire	120	90	50	60
Empire ※1	1,135	1,300	800	1,000
Crystal	245	240	120	110
Orchid	245	240	120	110

※1=dividable into three halls



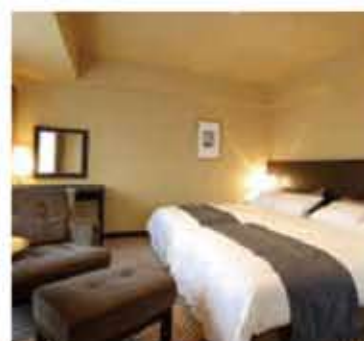
Station Hotel Kokura

ADDRESS 1-1-1 Asano, Kokurakita-ku, Kitakyushu

WEB <http://www.station-hotel.com/foreign/english.html>

PHONE +81-93-541-7111

Guest rooms 294 Meeting rooms 9



Hall	Size (m2)	Theater	Classroom	Banquet
Houjyo ※2	428	400	290	350
Kisshou	230	230	135	150
Tokiwa	60	64	30	35
Kifune	68	56	30	40
Hisho ※1	810	1,000	500	700

※1=dividable into three halls
※2=dividable into two halls



Premier Hotel Mojiko

ADDRESS 9-11 Minatomachi, Moji-ku, Kitakyushu

WEB <http://premierhotel-group.com/mojikohotel/english/>

PHONE +81-93-321-1111

Guest rooms 134 Meeting rooms 2

Hall	Size (m2)	Theater	Classroom	Banquet
Spazio	392	350	200	250
Gioia ※1	347	200	150	200

※1=dividable into three halls



Hotel New Tagawa

ADDRESS 3-46 Furusenba-machi, Kokurakita-ku, Kitakyushu

PHONE +81-93-521-7000

Guest rooms 88 Meeting rooms 7

Hall	Size (m2)	Theater	Classroom	Banquet
Gekka	587	650	360	400
Hanei	313	200	120	180
Mai	500	320	240	280

Below is a list of additional hotels with about 3,500 guest rooms that are within a 10-minute walk from the convention zone, for a total of about 7,000 guest rooms available for your event.

Asano Hotel

Guest rooms 51

WEB <http://www.kiteyone.net/asanohotel/asanohE/main.html>

PHONE +81-93-521-3366

APA Hotel Kokura Ekimae

Guest rooms 196

WEB http://www.apahotel.com/e.ju.hp.transer.com/language/kyusyu/13_kokura-ekimae.htm

PHONE +81-93-531-4000

Daiwa Roynet Hotel Kokuraekimae

Guest rooms 175

WEB <http://www.daiwaroynet.jp/english/kokuraekimae/>

PHONE +81-93-513-7580

Hotel Crown Palais Kokura

Guest rooms 220

WEB <http://www.crownpalais.jp/kokura/en/>

PHONE +81-93-631-1111

JR Kyushu Hotel Kokura

Guest rooms 187

WEB <http://www.jrk-hotels.co.jp/en/Kokura/>

PHONE +81-93-522-8800

Nishitetsu Inn Kokura

Guest rooms 570

WEB <http://www.n-inn.jp/english/hotels/kokura/>

PHONE +81-93-511-5454

Super Hotel Kokuraeki Minamiguchi

Guest rooms 108

WEB <http://www.superhoteljapan.com/en/s-hotels/kokura/>

PHONE +81-93-541-9000

Toyoko Inn Kokuraeki Shinkansenguchi

Guest rooms 136

WEB http://www.toyoko-inn.com/e_hotel/00219/index.html

PHONE +81-93-541-1045

Toyoko Inn Kokuraeki Minamiguchi

Guest rooms 189

WEB http://www.toyoko-inn.com/e_hotel/00152/index.html

PHONE +81-93-511-1045

Kitakyushu Yahata Royal Hotel

Guest rooms 295

WEB <http://www.daiwaresort.jp/en/yahata/index.html>

PHONE +81-93-662-1020

Hotel Crown Palais Kitakyushu

Guest rooms 215

WEB <http://www.crownpalais.jp/kitakyushu/en/>

PHONE +81-93-511-4111

Places of Interest



Kokura Castle

WEB <http://www.kokura-castle.jp/>

Hours: Open year-round, 9:00-18:00
(9:00-17:00 from Nov to Mar. Entry up to 30 min. prior to closing)
Fee: 350 yen



Mt. Sarakura

(Sarakura Tozan Railway Co., Ltd.)

WEB <http://www.sarakurayama-cablecar.co.jp/sarakurayama-english.pdf>

Hours: The cable car/slope car to the top of the mountain runs until 17:20 on weekdays and until 21:20 on weekends/holidays.
*Operating hours may change depending on the season.
Fare for cable car/slope car: 1,200 yen, round-trip



Mojiko Retro (Mojiko Retro Information)

WEB <http://www.en.mojiko.info/>



Karato Market

WEB <http://www.karatoichiba.com/>



Kitakyushu Museum of Natural History & Human History

WEB <http://www.kmnh.jp/english/>

Closed: Year end / New Year's, late June
Hours: 9:00-17:00 (entry until 16:30)
Fee: 500 yen



Nissan Motor Kyushu

WEB <http://www.nissankyusyu.co.jp/ENGLISH/>

Closed: Weekends (excluding long holidays)
Hours: 9:00-17:00
Fee: Free. Reservations required for factory tours (taken from 8:00 on the day marking 3 months prior to day of tour)



TOTO Museum

WEB <http://www.toto.co.jp/museum/en/>

Closed: Mon, summer break, year end / New Year's
Hours: 10:00-17:00 (entry until 16:30)
Fee: Free. Reservations required for groups (20 or more)



YASKAWA Innovation Center

WEB <https://www.yaskawa.co.jp/robot-vil/en/mirakan/index.html>

Closed: Weekends, holiday, company holidays. Tours may be suspended depending on the company's schedule.
Hours: 9:00-16:00 (3 tours/day) *Closed from 12:00-13:00
Fee: Free. Reservations required for groups of 10 or more (up to 14 days to 3 months prior to day of tour)



Kitakyushu Environment Museum

WEB <http://eco-museum.com/>

Closed: Mon (or the following day if Mon is a holiday / non-working day), year end / New Year's
Hours: 9:00-17:00 (entry until 16:30)
Fee: Free. Reservations required for groups



Kitakyushu Eco-Town (Kitakyushu Eco-Town Center)

WEB <http://www.kitaq-ecotown.com/>

Closed: Sun, holidays, year end / New Year's
Hours: 9:00-17:00 (morning/afternoon tours)
Fee: 100 yen. Reservations required for tours (up to 2 weeks prior to day of tour)



Former Matsumoto Residence

(The Industry Club of West Japan)

Closed: Tue, summer break, year end / New Year's
Hours: 10:00-18:00. Reservations required for meals, dinner parties



Sankiro

Closed: Mon (or the following day if Mon is a holiday / non-working day)
Hours: 10:00-17:00
Fee: Free (100 yen entrance free for 2nd floor only)
Restaurant: Sankiro Saryo



Kitakyushu International Convention Zone and Downtown Area



For more information, visit:

GURURICH! KITAQSHU KITAKYUSHU CITY TRAVEL GUIDE
<http://www.gururich-kitaq.com/en/>